

# OUT OF SCHOOL HOURS CARE

IN-HOUSE	FULL FEE	\$63.00	CCS REDUCED FEE*	\$9.31 - \$31.00
	EXCURSION / INCURSION	FULL FEE	\$82.00	CCS REDUCED FEE*

\*Estimation of fees after subsidy is applied

## Vacation Care | 29 June–17 July

### WEEK 1

Monday  
29 June

In-House  
**Wild West**



Yeehaw! Put on your boots and join us for a Wild West Day filled with cowboy and cowgirl fun, horse-inspired activities, country games and creative adventures.

Outcomes: 2

Tuesday  
30 June

In-House  
**Winter Wonderland**



Enter a world of sparkling snow and winter magic with themed games, cosy crafts, exciting activities and frosty adventures all day long! Lunch provided.

Outcomes: 1

Wednesday  
1 July

Excursion  
**Roller Skating At St Clair**



Roll into an action-packed day of music, laughter and non-stop fun as we hit the skating rink for an exciting adventure with our friends! Depart: 11:00am Return: 1:30pm Transport: Private Bus

Outcomes: 3

Thursday  
2 July

In-House  
**Marvel Creators**



Suit up for a Marvel-inspired superhero adventure! Create your own superhero identity and enjoy action-packed games, heroic challenges, crafts and superpowered fun.

Outcomes: 1

Friday  
3 July

In-House  
**Dreaming and Discovering**



Celebrate and learn about Aboriginal culture through respectful storytelling, creative art, music and hands-on cultural experiences inspired by tradition and community.

Outcomes: 2, 4

### WEEK 2

Monday  
6 July

Excursion  
**Playground Palooza**

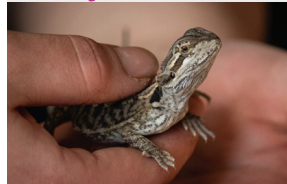


Back by popular demand we're heading to Princess Elizabeth Playspace for another fun adventure and picnic lunch! Depart: 10:30am Return: 1:30pm Transport: Private Bus

Outcomes: 3

Tuesday  
7 July

Incursion  
**Animal Anonymous**



Step into the wild with Animal Anonymous as you meet incredible animals and learn fascinating wildlife facts through fun hands-on experiences! Start: 12:30pm Finish: 1:30pm

Outcomes: 4

Wednesday  
8 July

In-House  
**Project Slime**



Dive into a messy day of slime science and sensory fun as you mix, stretch and create colourful slime while exploring simple science reactions. Lunch provided.

Outcomes: 3

Thursday  
9 July

Incursion  
**Magic In Motion**



Step into a world of wonder as a real magician visits us to perform an incredible live show filled with mind blowing tricks, illusions, and interactive magic! Start: 9:30am Finish: 11:00am

Outcomes: 1

Friday  
10 July

In-House  
**PJ Party**



You are invited to wear your favourite pyjamas and enjoy a chilled-out day of movies, face masks and fun, calming activities!

Outcomes: 3



Book your session via the Xplor Home App  
Visit [sa.ymca.org.au/OSHC](http://sa.ymca.org.au/OSHC) for more information

St. Dominic's OSHC  
139 Molesworth Street, North Adelaide, SA, 5006  
Sophie Dal Corobbo  
0461 265 833

OSHC Support Team  
P 08 8200 2516  
E [oshc@ymcasa.org.au](mailto:oshc@ymcasa.org.au)  
f /YMCA SA OSHC



# OUT OF SCHOOL HOURS CARE

IN-HOUSE	FULL FEE	\$63.00	CCS REDUCED FEE*	\$9.31 - \$31.00
	EXCURSION / INCURSION	FULL FEE	\$82.00	CCS REDUCED FEE*

\*Estimation of fees after subsidy is applied

## Vacation Care | 29 June–17 July

### WEEK 3

Monday  
13 July

Incurion  
**Bunnings Workshop**



Get ready for a hands-on day of building and creativity with Bunnings! Use tools, follow simple building steps and create your own project. With a sausage sizzle lunch!  
Start: 10:00am  
Finish: 2:00pm  
Outcomes: 1

Tuesday  
14 July

In-House  
**Escape The Day**



Enjoy a thrilling day of teamwork and problem-solving as you work together to solve clues, complete challenges and escape the room in this fun and interactive adventure.  
Outcomes: 1

Wednesday  
15 July

Excursion  
**Bounce**



Jump, climb and explore through a variety of fun physical activities building confidence, coordination and teamwork.  
Depart: 10:00am  
Return: 12:30pm  
Transport: Private Bus  
Outcomes: 3

Thursday  
16 July

In-House  
**Disco Styling**



Get ready for a fun-filled Disco with music, dancing and games, plus a special visit from a hair braider where you can enjoy colourful and creative hairstyles.  
Outcomes: 1, 3

Friday  
17 July

In-House  
**Clay Heroes**



Enjoy a creative day of clay making and painting, where you can design, mould and decorate your own unique creations while exploring your imagination and artistic skills.  
Outcomes: 1



Book your session via the Xplor Home App  
Visit [sa.ymca.org.au/OSHC](http://sa.ymca.org.au/OSHC) for more information

St. Dominic's OSHC  
139 Molesworth Street, North Adelaide, SA, 5006  
Sophie Dal Corobbo  
0461 265 833

OSHC Support Team  
P 08 8200 2516  
E [oshc@ymcasa.org.au](mailto:oshc@ymcasa.org.au)  
f /YMCA SA OSHC



# OUT OF SCHOOL HOURS CARE



**CONNECT**

*Building relationships, community bonds,  
and sense of belonging*

## Important information

### What is included

Breakfast and afternoon tea will be provided. Programmed activities including excursions, incursions and in-house activities.

### What to bring

YMCA OSHC promotes a healthy eating environment and encourages families to provide their children with a healthy assortment of food to bring for recess, and lunch. As well as healthy brain food and a water bottle every day.

### Fees and cancellations

All bookings must be received by Monday 15 June to avoid a \$3 casual fee. Cancellations must be made two weeks prior to the date of the requested care to avoid payment. By making a booking you are agreeing to pay the fees through your direct debit account in addition to normal OSHC bookings. Please review our terms and conditions online for our fee and policy information.

### Excursions

Please make sure you arrive at the service at least 30 minutes before the bus departure. Please make sure you sign the Excursion Authorisation when you sign your children into OSHC for that day. While bus drivers in SA are exempt from ensuring passengers under 16 years are restrained. YMCA will make every effort to ensure the safety of all children by using seatbelts that are supplied and be guided by our policies and transport risk assessments.

### Learning outcomes:



#### OUTCOME 1

Children and young people have a strong sense of identity



#### OUTCOME 2

Children and young people are connected and contribute to their world



#### OUTCOME 3

Children and young people have a strong sense of wellbeing



#### OUTCOME 4

Children and young people are confident and involved learners



#### OUTCOME 5

Children and young people are effective communicators

### Sun Smart Policy

Sun Smart guidelines are followed so please ensure children are in appropriate clothing and no singlets or thongs. Sunscreen is provided but if your child is sensitive to sunscreen, please bring your own.

### Things to remember

Please note that we are a nut-aware service and ask that you do not bring food that contain nut products. Handheld electronics and smart watches are not permitted at the centre. We welcome feedback and suggestions at any time, please see your centre staff. Programmed activities are subject to change.

### Operational hours

OSHC will be open from 6:30am - 6:00pm, please sign in and out between these times.

### Daily fees

In-house: \$63.00

\*CCS Reduced fee: \$9.31 - \$31.00

Excursion and Incursion: \$82.00

\*CCS Reduced fee: \$12.30 - \$41.00

\*Estimation of fees after subsidy is applied



Book your session via the Xplor Home App

Visit [sa.ymca.org.au/OSHC](http://sa.ymca.org.au/OSHC) for more information